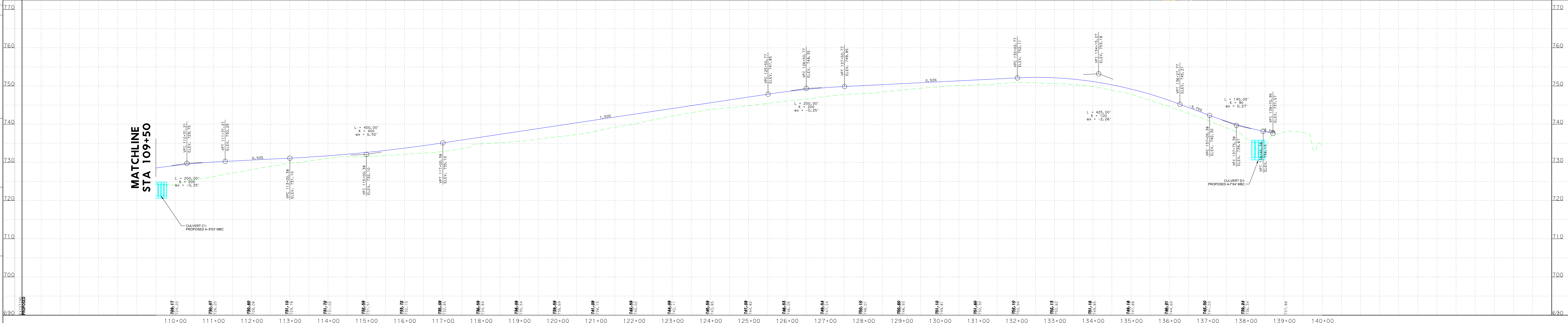
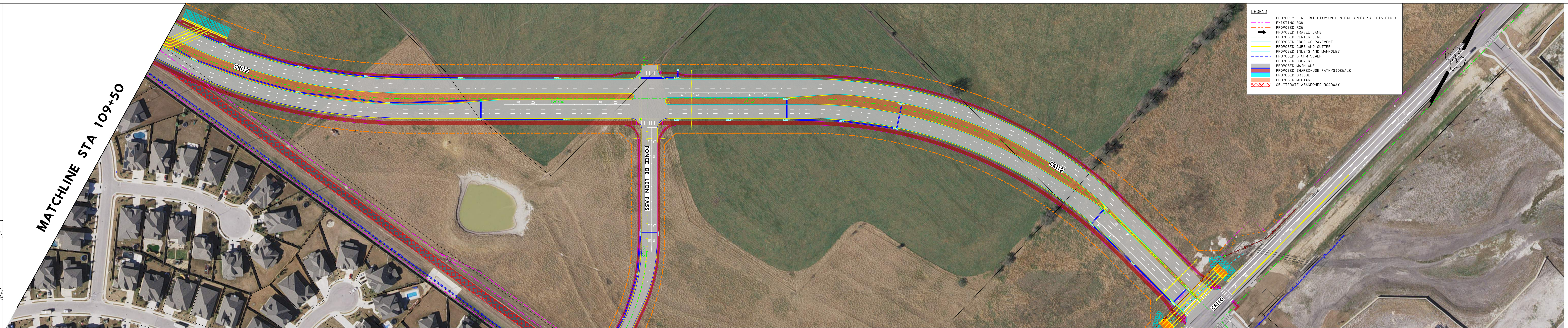
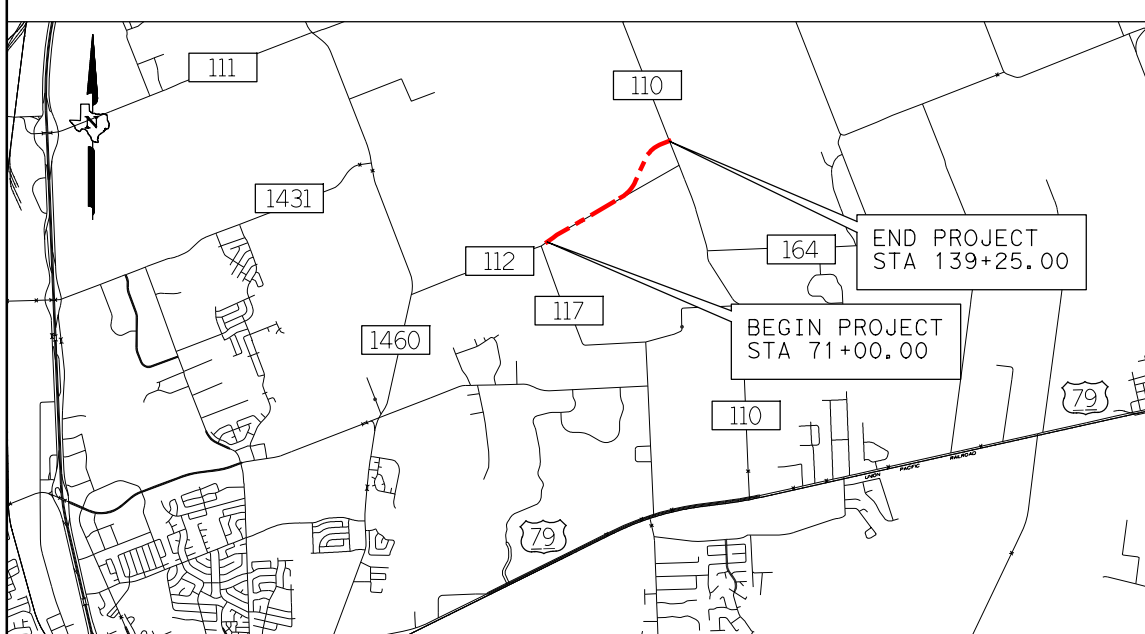
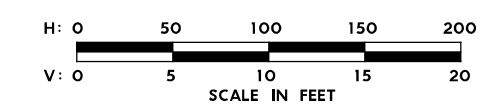


CITY OF ROUND ROCK

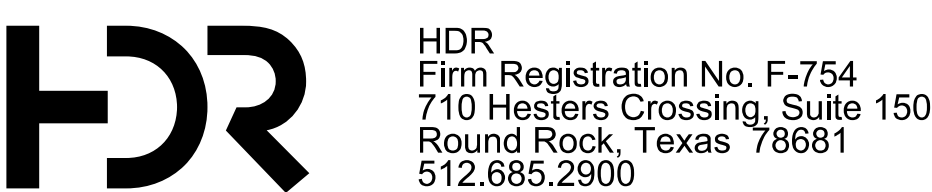
PRELIMINARY DESIGN FOR:
CR 112

COUNTY: WILLIAMSON
LIMITS: CR 112 FROM CR 117 TO CR 110
APPROX. LENGTH OF PROJECT= 1.3 MI
DESIGN SPEED= 45 MPH
FUNCTIONAL CLASSIFICATION=ARTERIAL
ROADWAY CLASSIFICATION=URBAN
TERRAIN=LEVEL
CURRENT ADT=5,000

COORDINATE SYSTEM:
HORIZONTAL DATUM IS BASED ON THE TEXAS STATE
PLANE CENTRAL ZONE (4203) NAD-83 (1993) SYSTEM.
COORDINATES ARE SURFACE VALUES BASED ON A
COMBINED SURFACE ADJUSTMENT FACTOR OF 1.000119.
VERTICAL DATUM IS NAVD-88.



CR 112
ULTIMATE SCHEMATIC
PLAN AND PROFILE



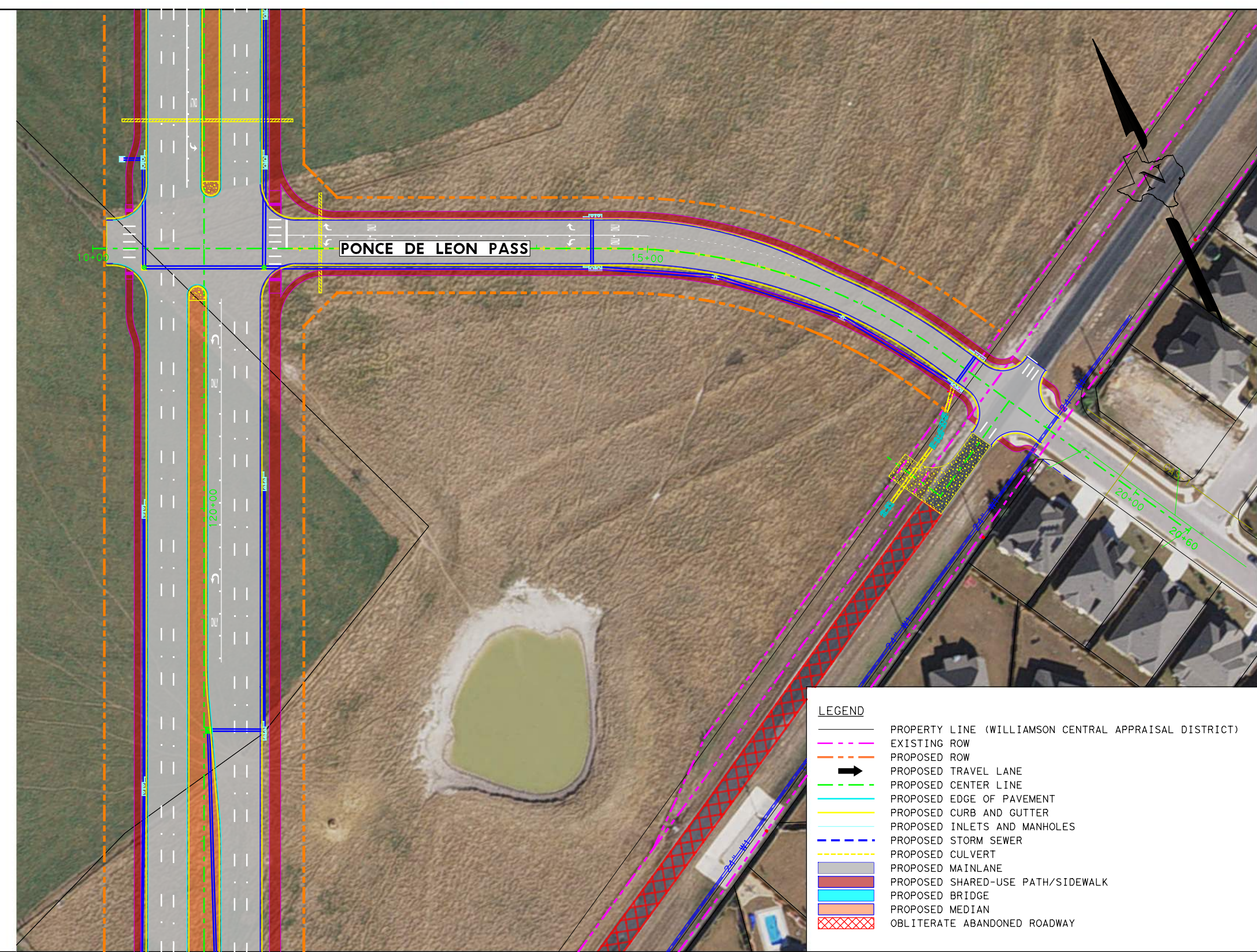
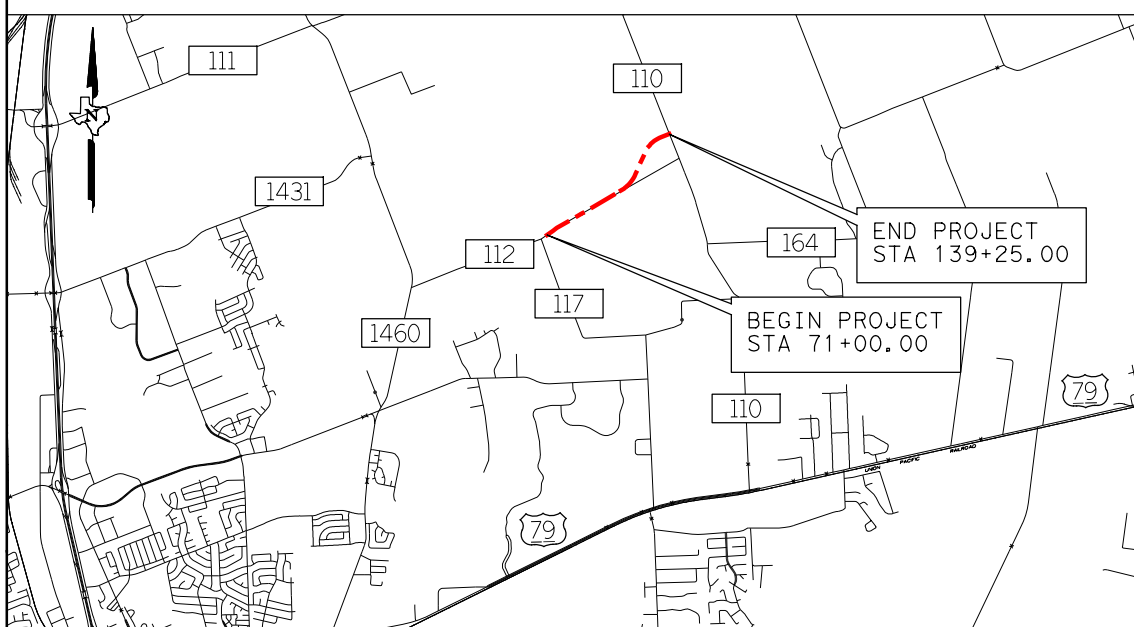
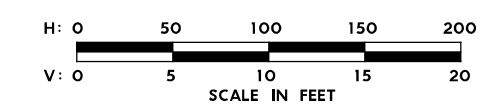
HDR
Firm Registration No. F-754
710 Hearsh Crossing, Suite 150
Round Rock, Texas 78681
512.685.2900

CITY OF ROUND ROCK

PRELIMINARY DESIGN FOR:
CR 112

COUNTY: WILLIAMSON
LIMITS: CR 112 FROM CR 117 TO CR 110
APPROX. LENGTH OF PROJECT= 1.3 MI
DESIGN SPEED= 45 MPH
FUNCTIONAL CLASSIFICATION=ARTERIAL
ROADWAY CLASSIFICATION=URBAN
TERRAIN-LEVEL
CURRENT ADT=5,000

COORDINATE SYSTEM:
HORIZONTAL DATUM IS BASED ON THE TEXAS STATE PLANE CENTRAL ZONE (4203) NAD-83 (1993) SYSTEM. COORDINATES ARE SURFACE VALUES BASED ON A COMBINED SURFACE ADJUSTMENT FACTOR OF 1.000119. VERTICAL DATUM IS NAVD-88.



- LEGEND**
- PROPERTY LINE (WILLIAMSON CENTRAL APPRAISAL DISTRICT)
 - - - EXISTING ROW
 - - - PROPOSED ROW
 - - - PROPOSED TRAVEL LANE
 - - - PROPOSED CENTER LINE
 - - - PROPOSED EDGE OF PAVEMENT
 - - - PROPOSED CURB AND GUTTER
 - - - PROPOSED THULETS AND MANHOLES
 - - - PROPOSED STORM SEWER
 - - - PROPOSED CULVERT
 - - - PROPOSED MAINLINE
 - - - PROPOSED SHARED-USE PATH/SIDEWALK
 - - - PROPOSED BRIDGE
 - - - PROPOSED MEDIAN
 - - - OBLITERATE ABANDONED ROADWAY

**CR 112
ULTIMATE SCHEMATIC
PLAN AND PROFILE**

